

--- Approximate
Study Area



1928 Oblique Aerial Photograph

Photo Courtesy of
the City of Regina Archives

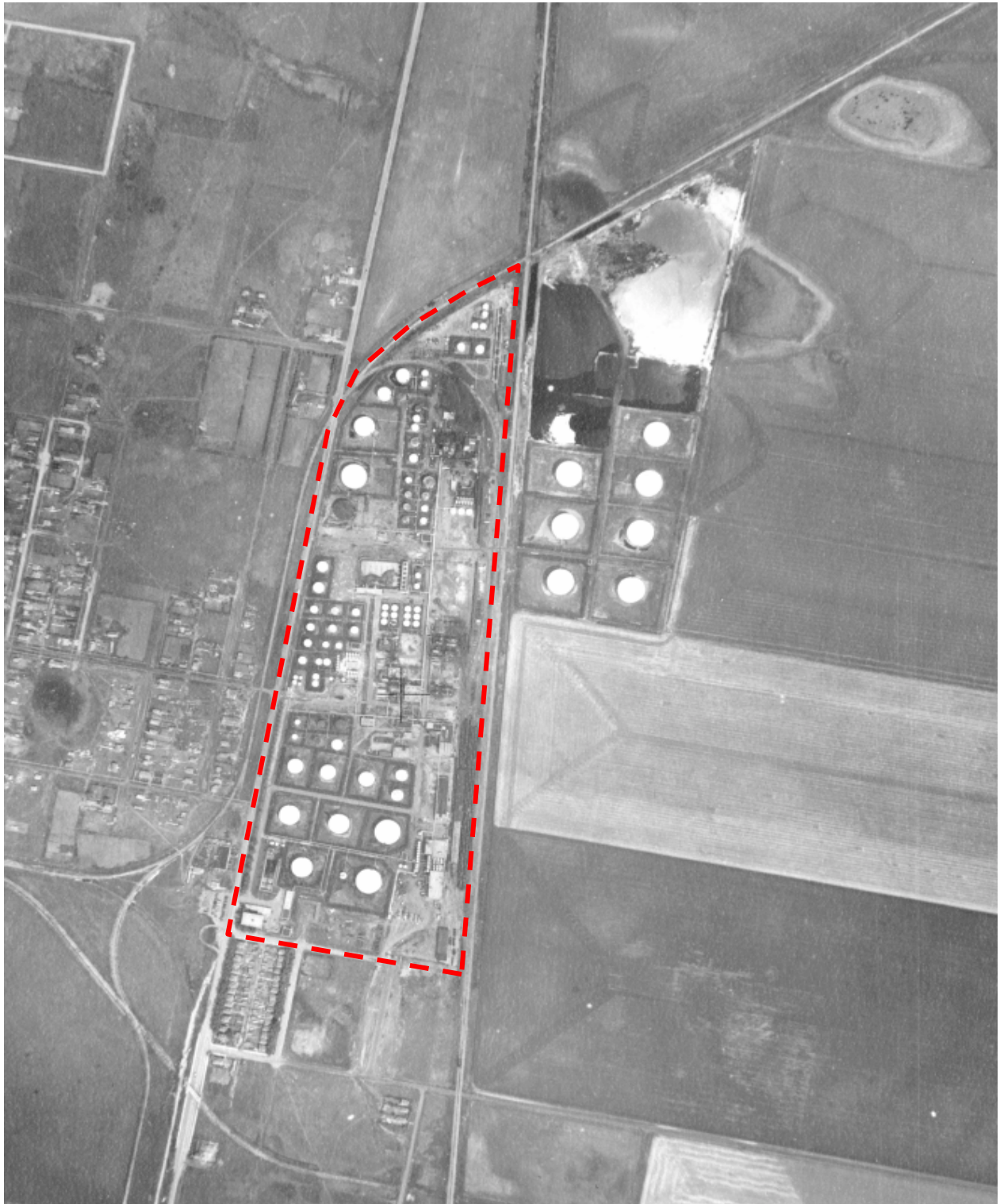
O'CONNOR ASSOCIATES

JOB NO.: 10-4700.300

DATE: 2008-05-29

DRAWN BY: RAN

DWG. NO.: E-1



--- Approximate Study Area



1947 Aerial Photograph

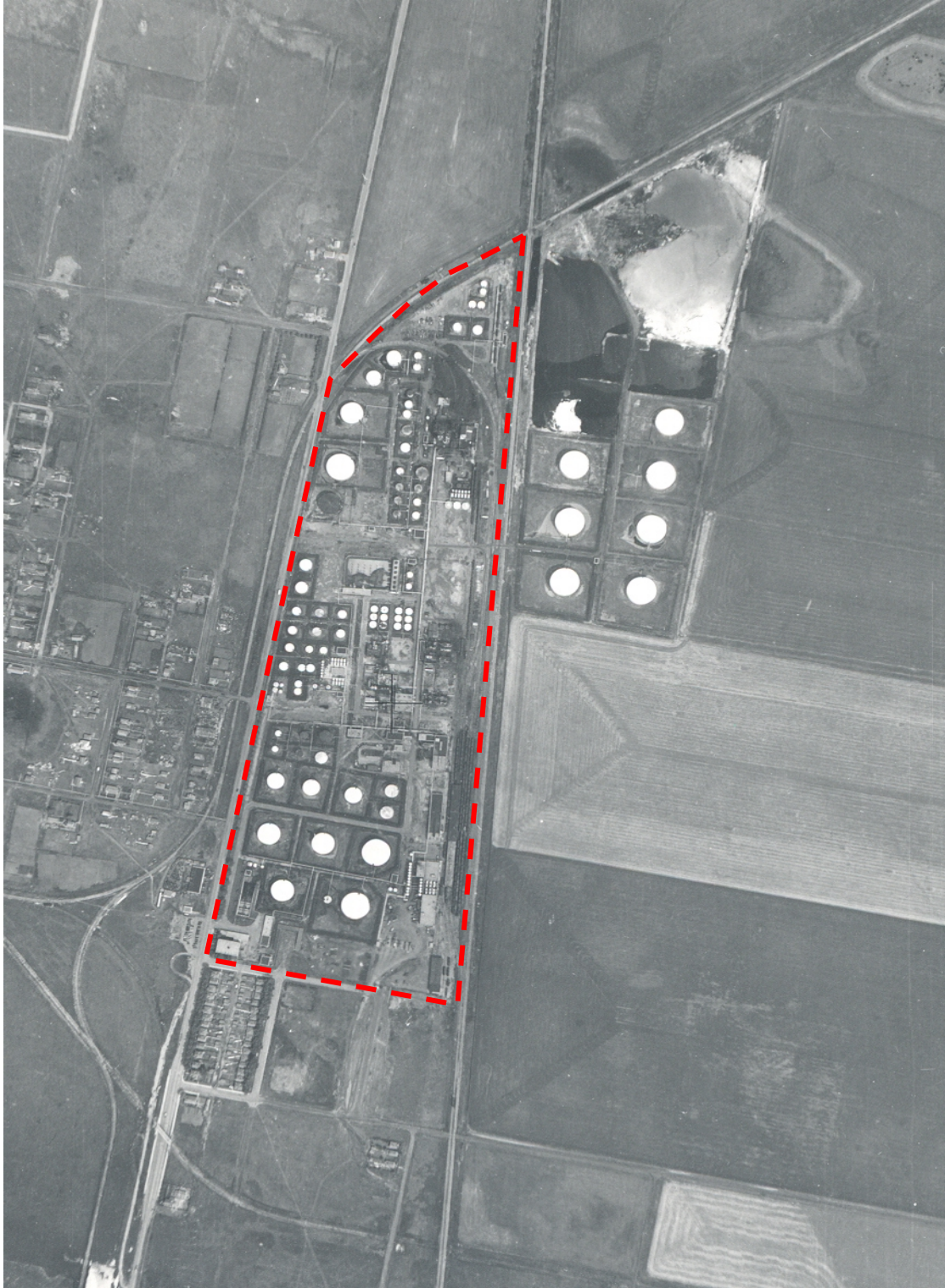
O'CONNOR ASSOCIATES

JOB NO.: 10-4700.300

DATE: 2008-05-15

DRAWN BY: RAN

DWG. NO.: E-2



--- Approximate Study Area



1948 Aerial Photograph

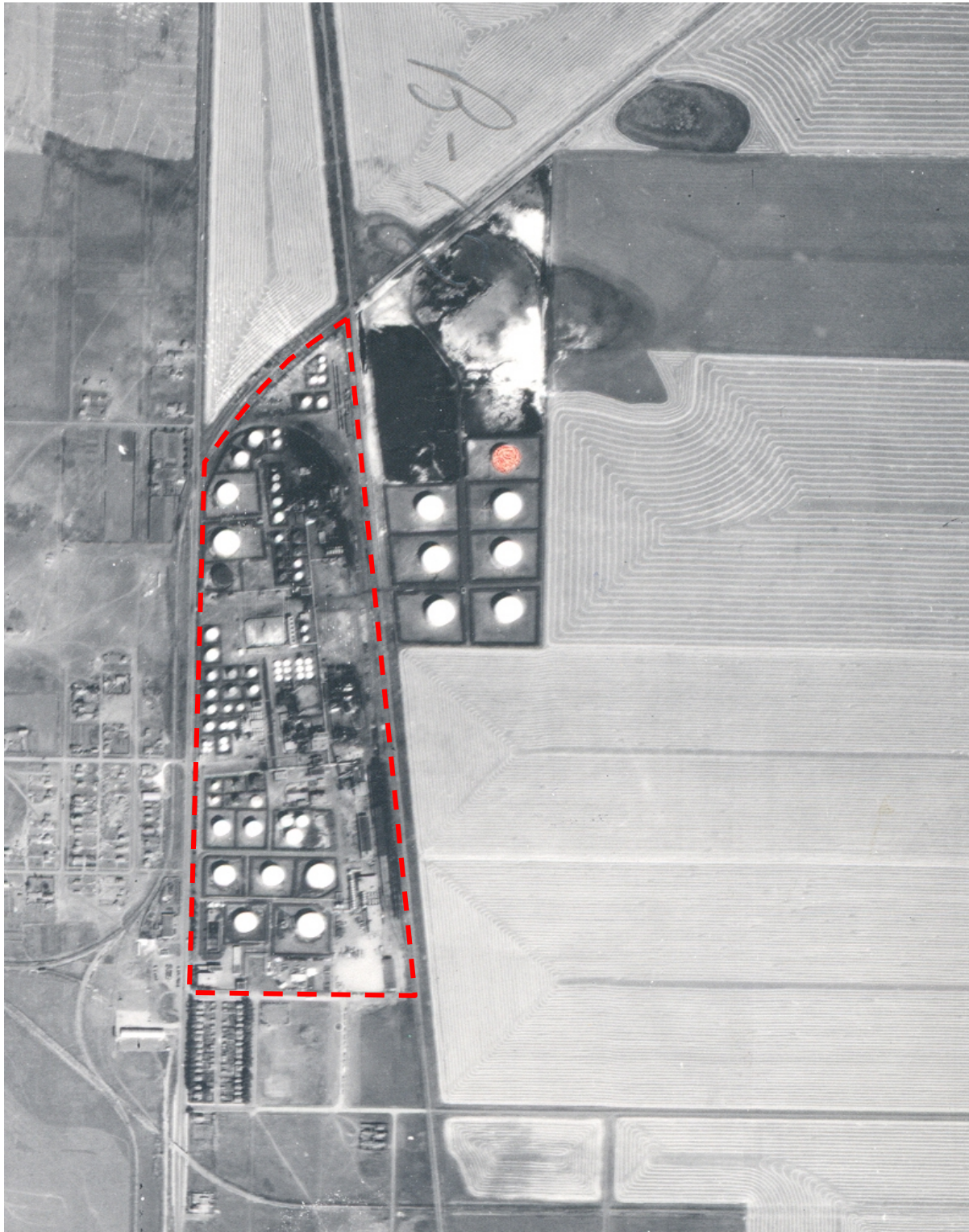
O'CONNOR ASSOCIATES

JOB NO.: 10-4700.300

DATE: 2008-05-21

DRAWN BY: RAN

DWG. NO.: E-3



--- Approximate Study Area



1949 Aerial Photograph

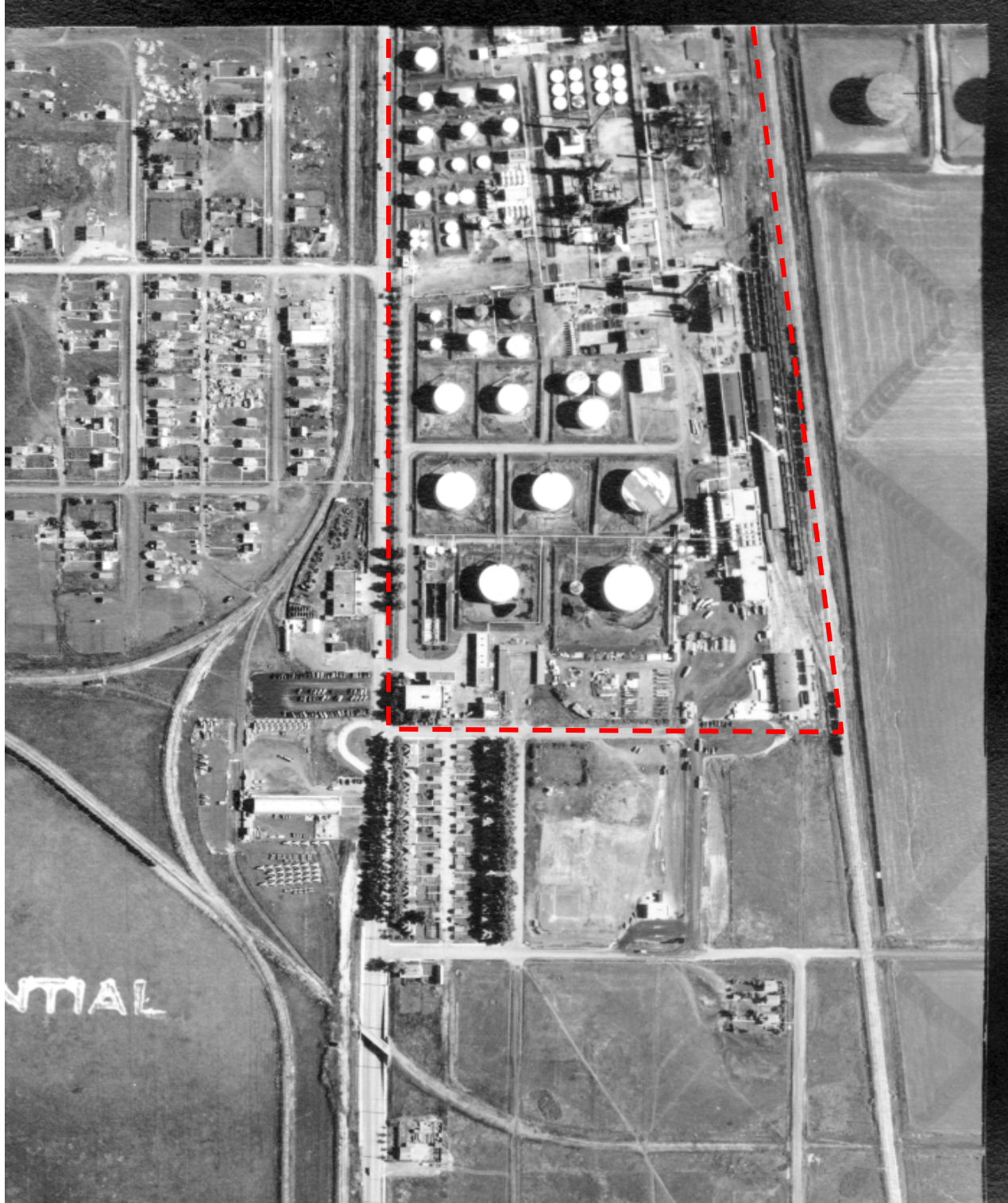
O'CONNOR ASSOCIATES

JOB NO.: 10-4700.300

DATE: 2008-05-21

DRAWN BY: RAN

DWG. NO.: E-4



--- Approximate Study Area



1950 Aerial Photograph

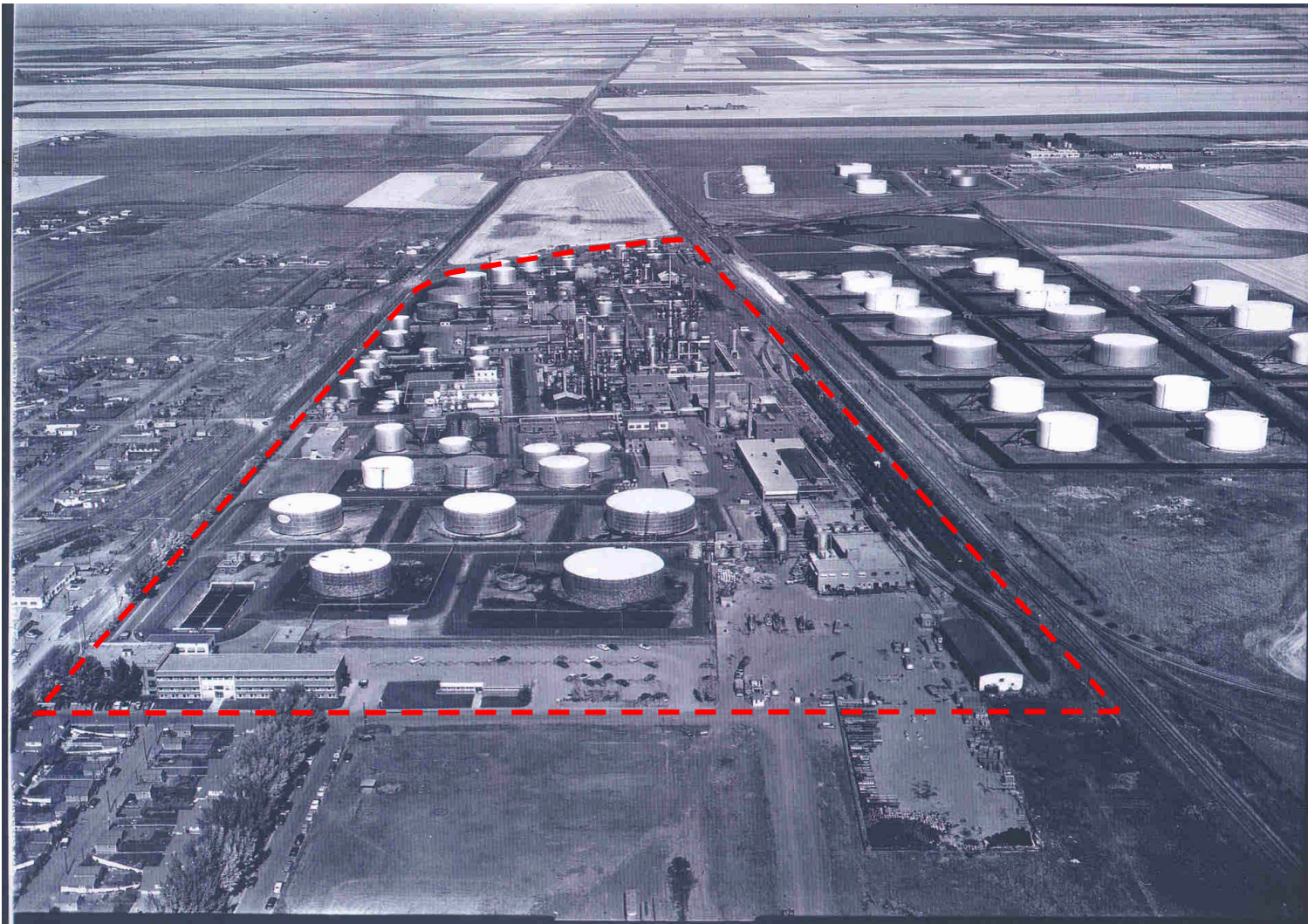
O'CONNOR ASSOCIATES

JOB NO.: 10-4700.300

DATE: 2008-05-15

DRAWN BY: RAN

DWG. NO.: E-5



--- Approximate
Study Area



1954 Oblique Aerial Photograph

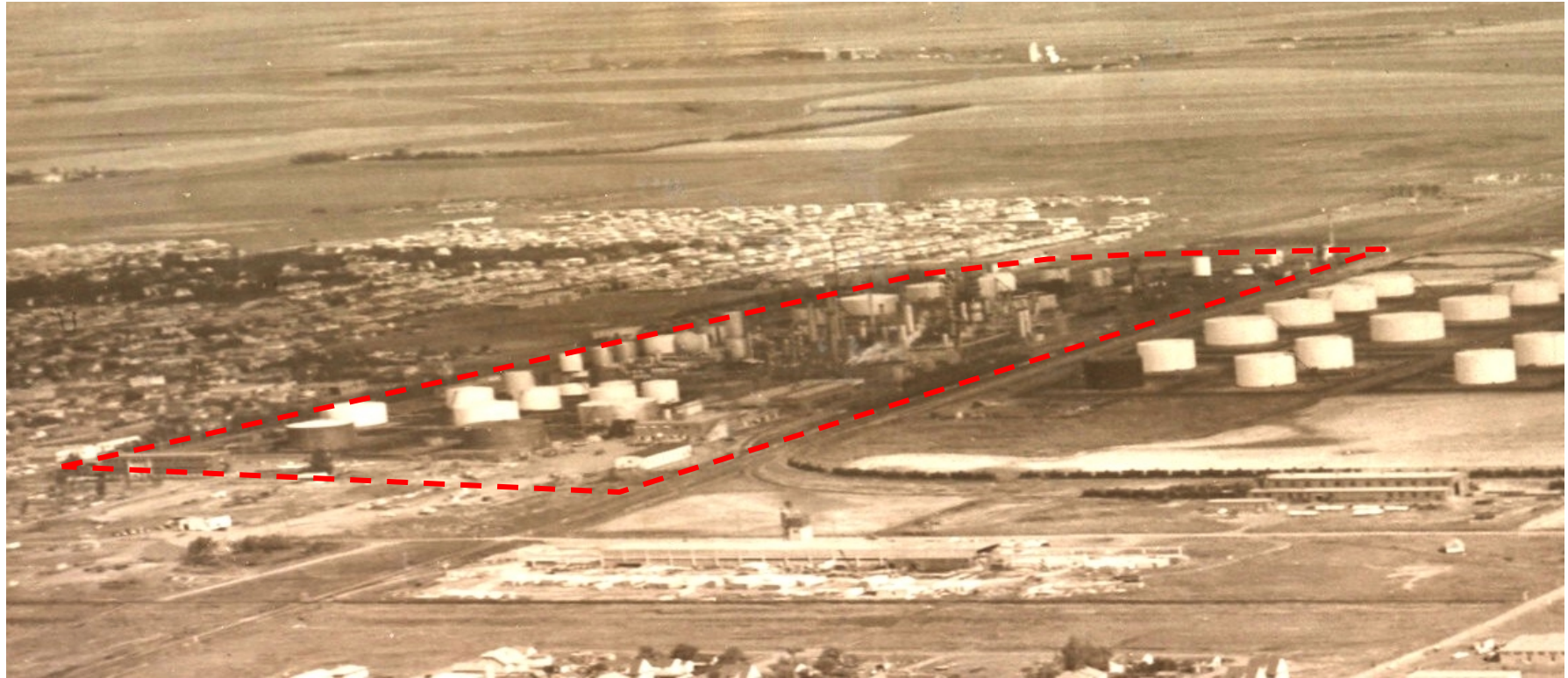
O'CONNOR ASSOCIATES

JOB NO.: 10-4700.300

DATE: 2008-06-26

DRAWN BY: RAN

DWG. NO.: E-6



--- Approximate
Study Area



1960 Oblique Aerial Photograph

Photo Courtesy of
the City of Regina Archives

O'CONNOR ASSOCIATES

JOB NO.: 10-4700.300

DATE: 2008-05-29

DRAWN BY: RAN

DWG. NO.: E-7



--- Approximate Study Area



1961 Aerial Photograph

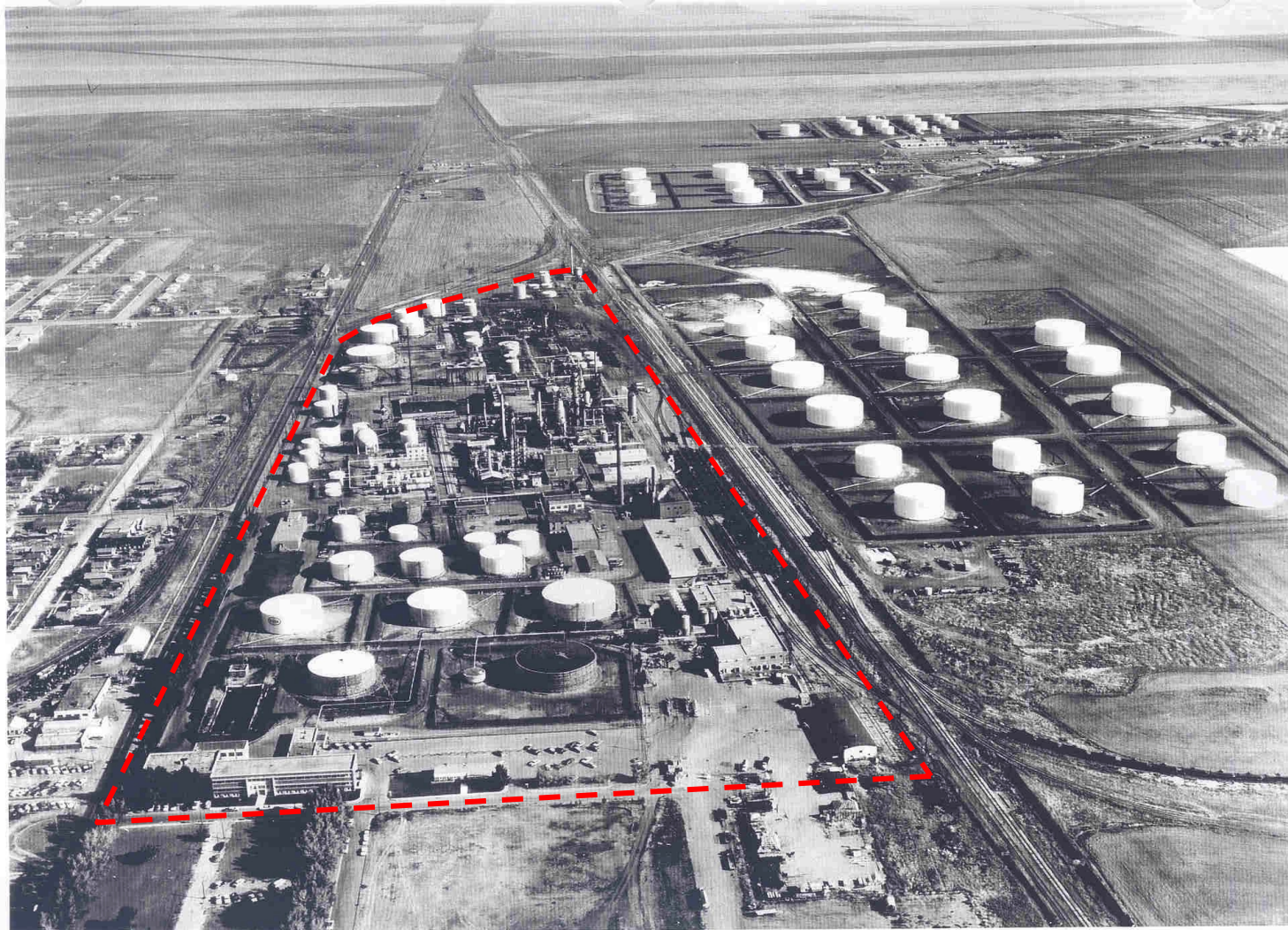
O'CONNOR ASSOCIATES

JOB NO.: 10-4700.300

DATE: 2008-05-21

DRAWN BY: RAN

DWG. NO.: E-8



--- Approximate
Study Area



1961 Oblique Aerial Photograph
Looking North

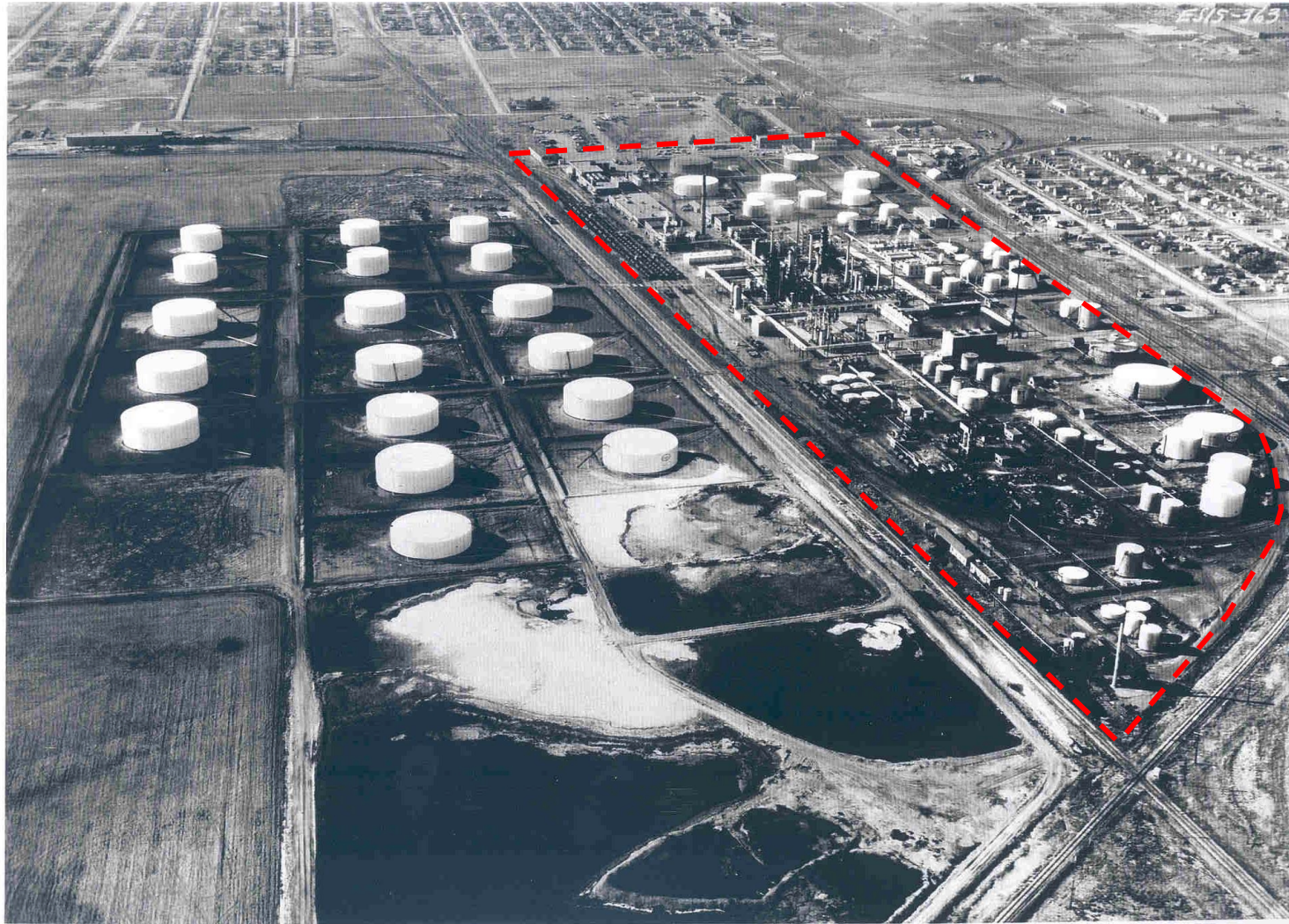
O'CONNOR ASSOCIATES

JOB NO.: 10-4700.300

DATE: 2008-06-26

DRAWN BY: RAN

DWG. NO.: E-9



--- Approximate Study Area



1961 Oblique Aerial Photograph
Looking South at Waste Pits

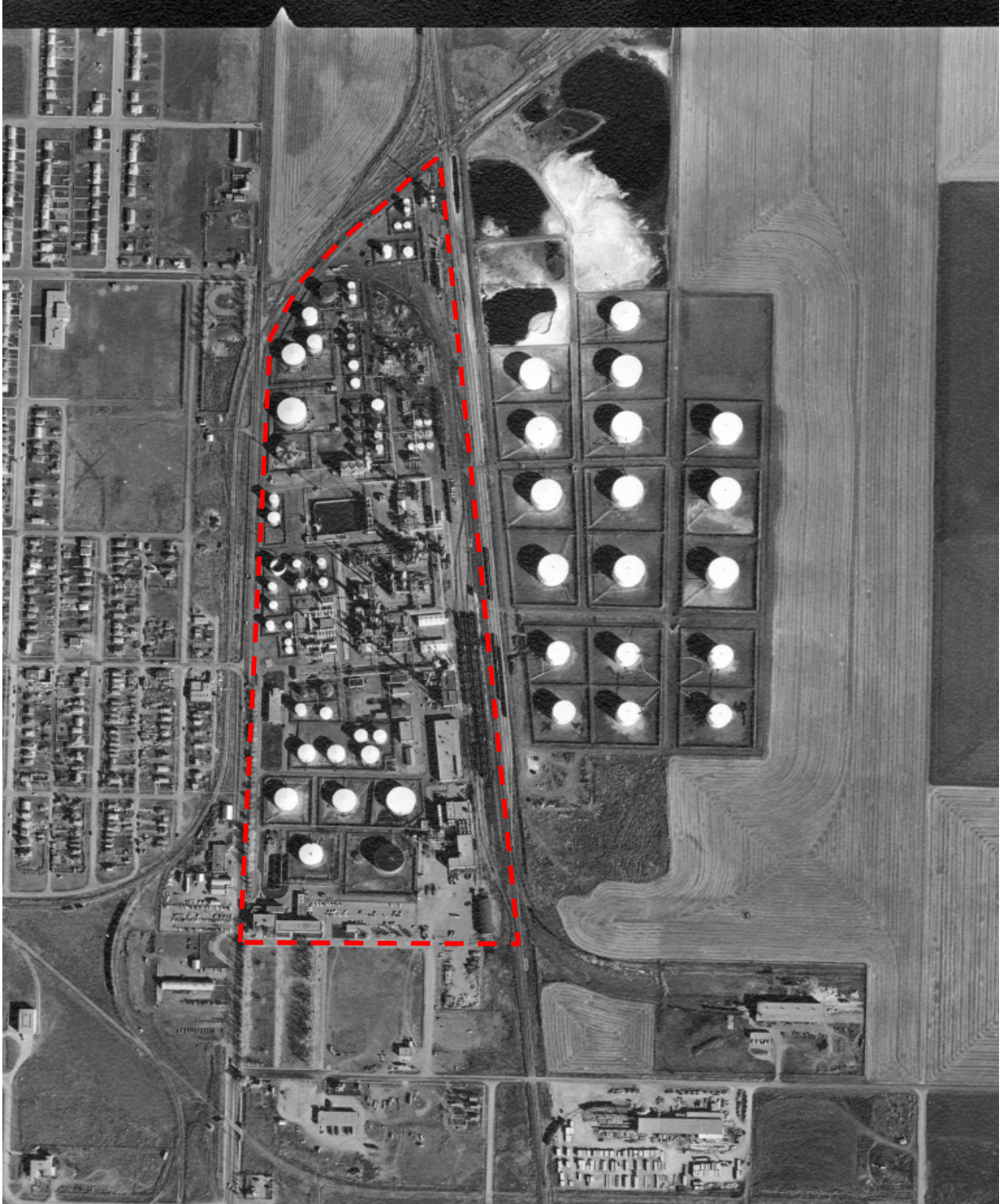
O'CONNOR ASSOCIATES

JOB NO.: 10-4700.300

DATE: 2008-06-26

DRAWN BY: RAN

DWG. NO.: E-10



--- Approximate Study Area



1962 Aerial Photograph

O'CONNOR ASSOCIATES

JOB NO.: 10-4700.300

DATE: 2008-05-15

DRAWN BY: RAN

DWG. NO.: E-11



--- Approximate Study Area



1964 Oblique Aerial Photograph

Photo Courtesy of
the City of Regina Archives

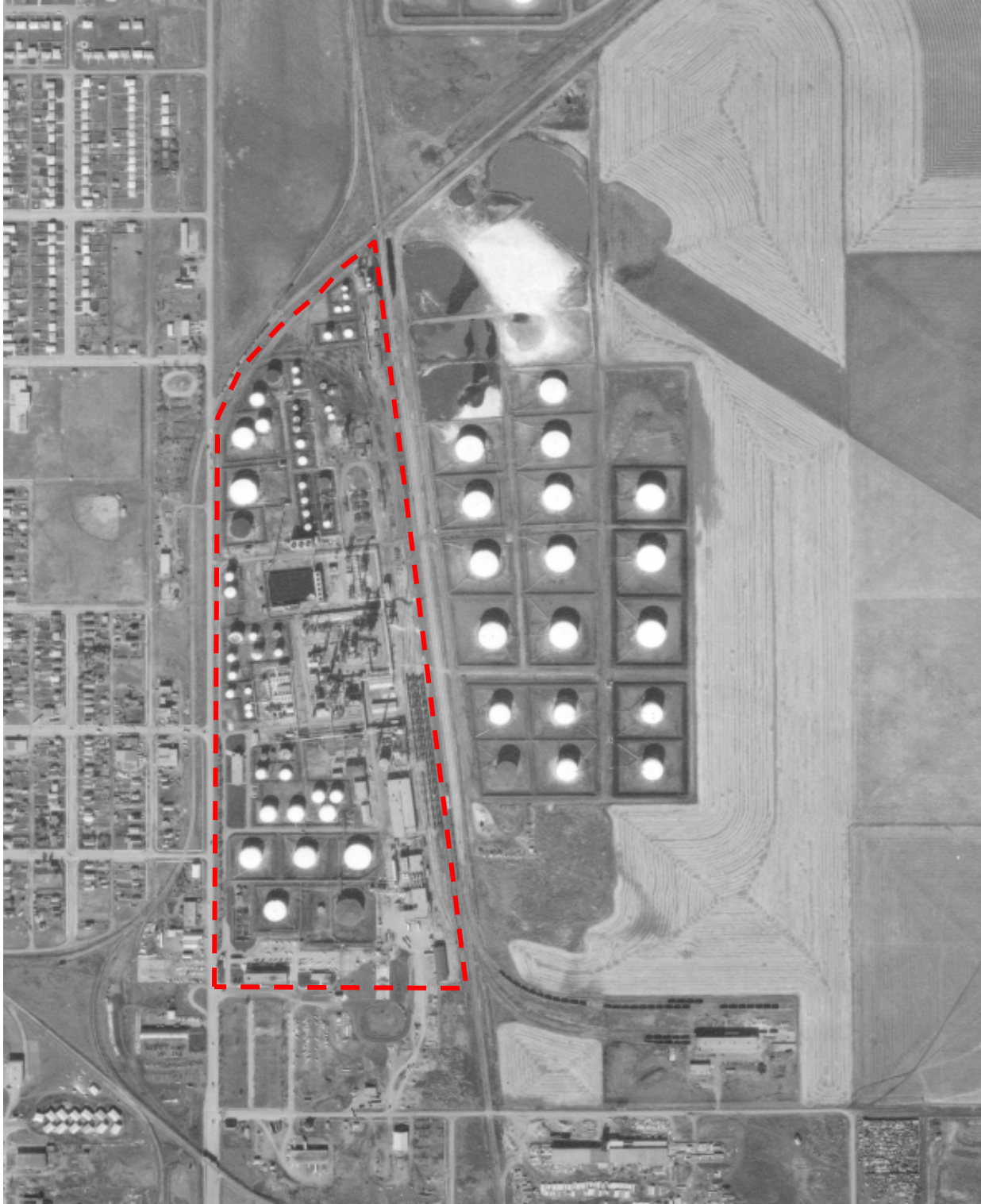
O'CONNOR ASSOCIATES

JOB NO.: 10-4700.300

DATE: 2008-05-29

DRAWN BY: RAN

DWG. NO.: E-12



--- Approximate Study Area



1965 Aerial Photograph

O'CONNOR ASSOCIATES

JOB NO.: 10-4700.300

DATE: 2008-05-15

DRAWN BY: RAN

DWG. NO.: E-13



— — — — — Approximate Study Area



1966 Aerial Photograph

O'CONNOR ASSOCIATES

JOB NO.: 10-4700.300

DATE: 2008-05-15

DRAWN BY: RAN

DWG. NO.: E-14



--- Approximate Study Area



1968 Aerial Photograph

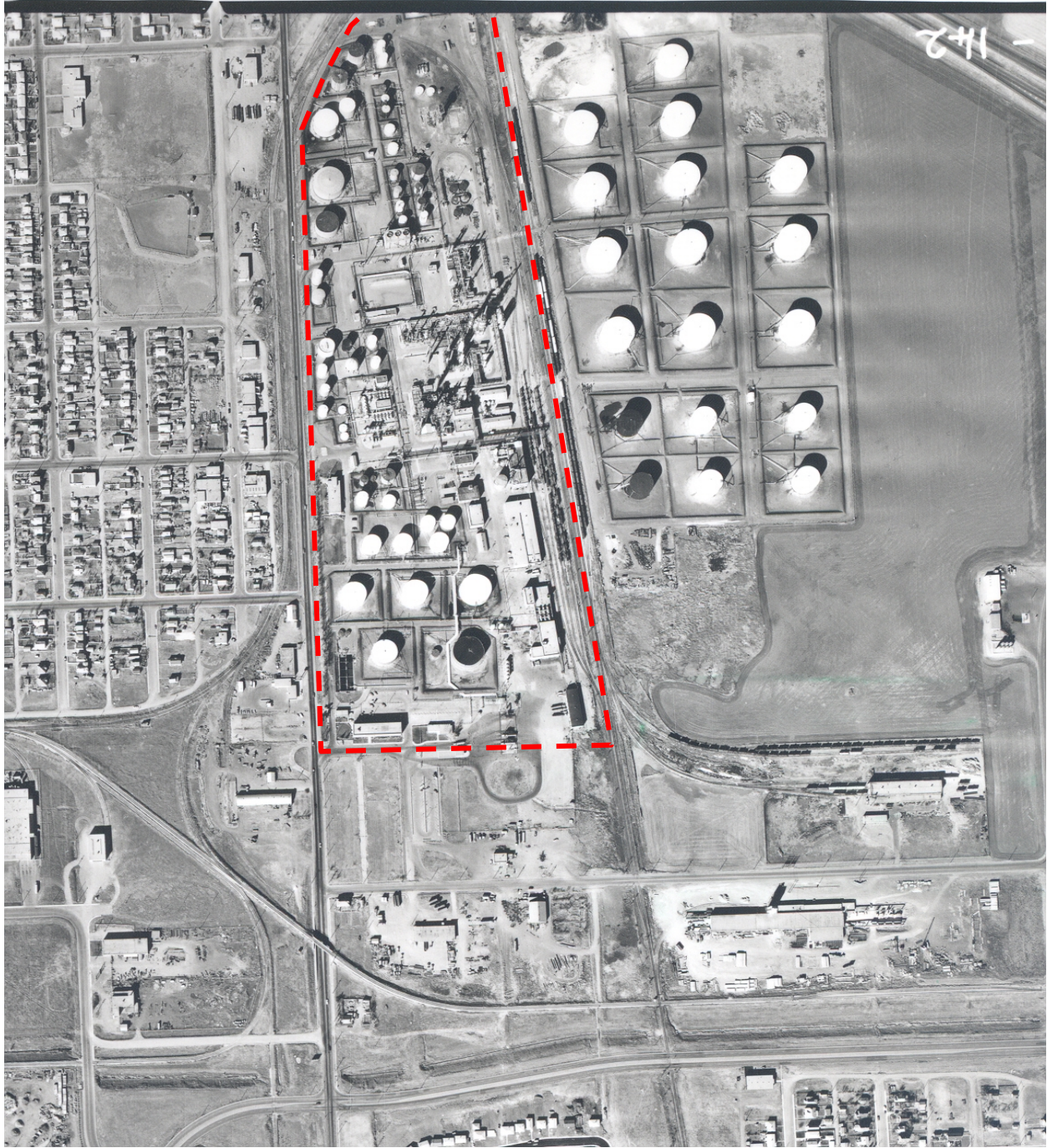
O'CONNOR ASSOCIATES

JOB NO.: 10-4700.300

DATE: 2008-05-06

DRAWN BY: RAN

DWG. NO.: E-15



--- Approximate Study Area



1971 Aerial Photograph

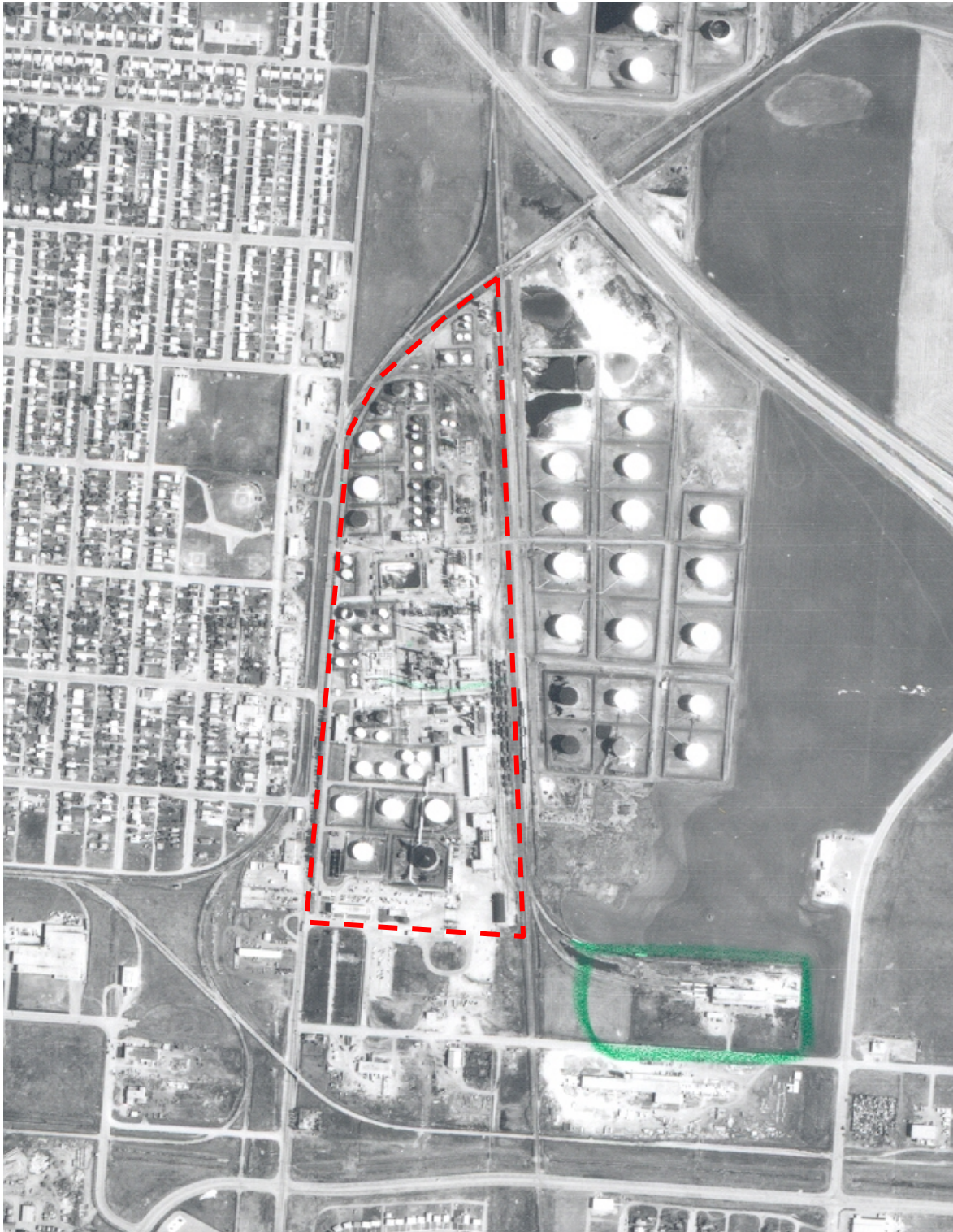
O'CONNOR ASSOCIATES

JOB NO.: 10-4700.300

DATE: 2008-05-21

DRAWN BY: RAN

DWG. NO.: E-16



--- Approximate Study Area



1972 Aerial Photograph

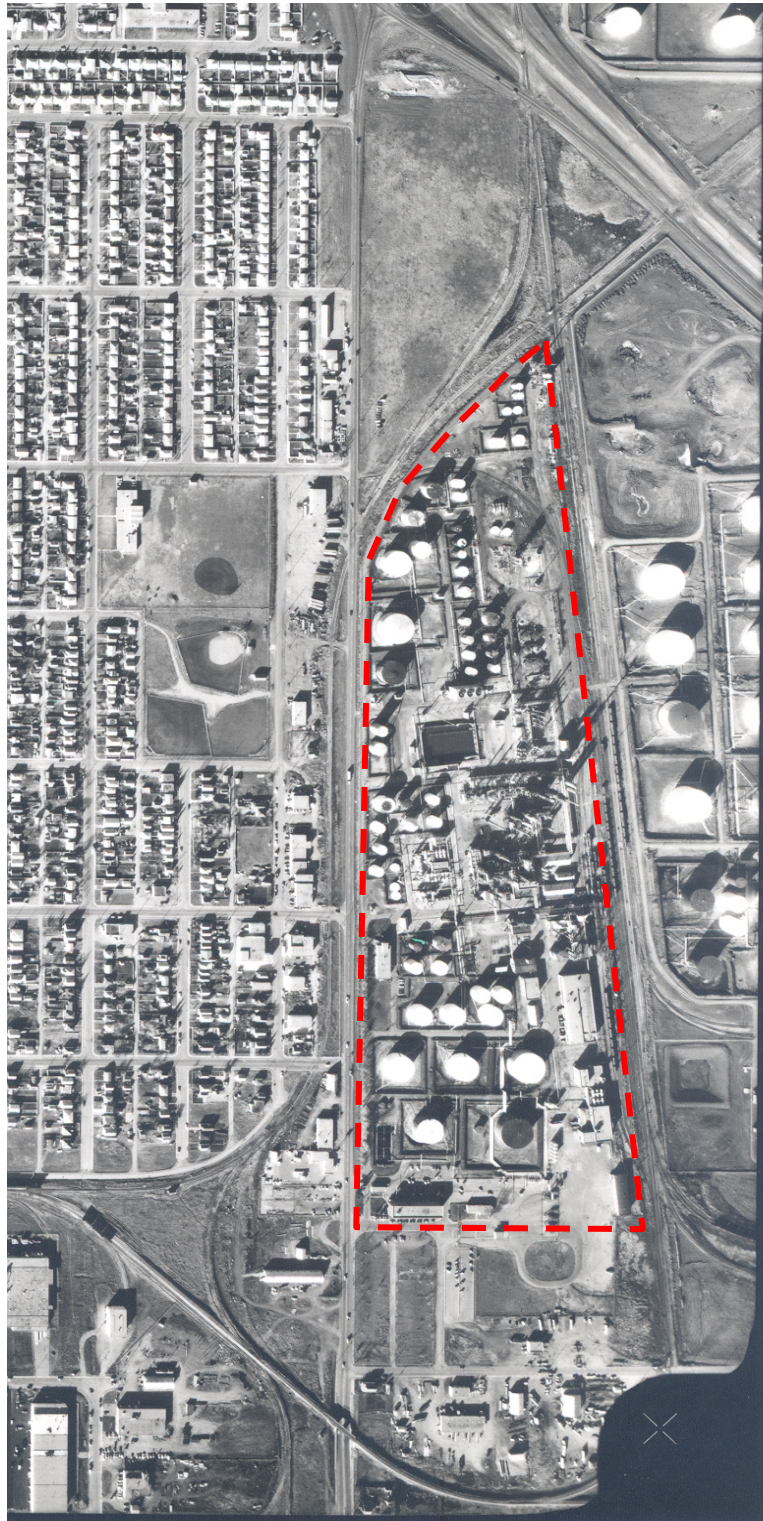
O'CONNOR ASSOCIATES

JOB NO.: 10-4700.300

DATE: 2008-05-21

DRAWN BY: RAN

DWG. NO.: E-17



--- Approximate Study Area



1975 Aerial Photograph

O'CONNOR ASSOCIATES

JOB NO.: 10-4700.300

DATE: 2008-05-21

DRAWN BY: RAN

DWG. NO.: E-18



--- Approximate Study Area



1977 Aerial Photograph

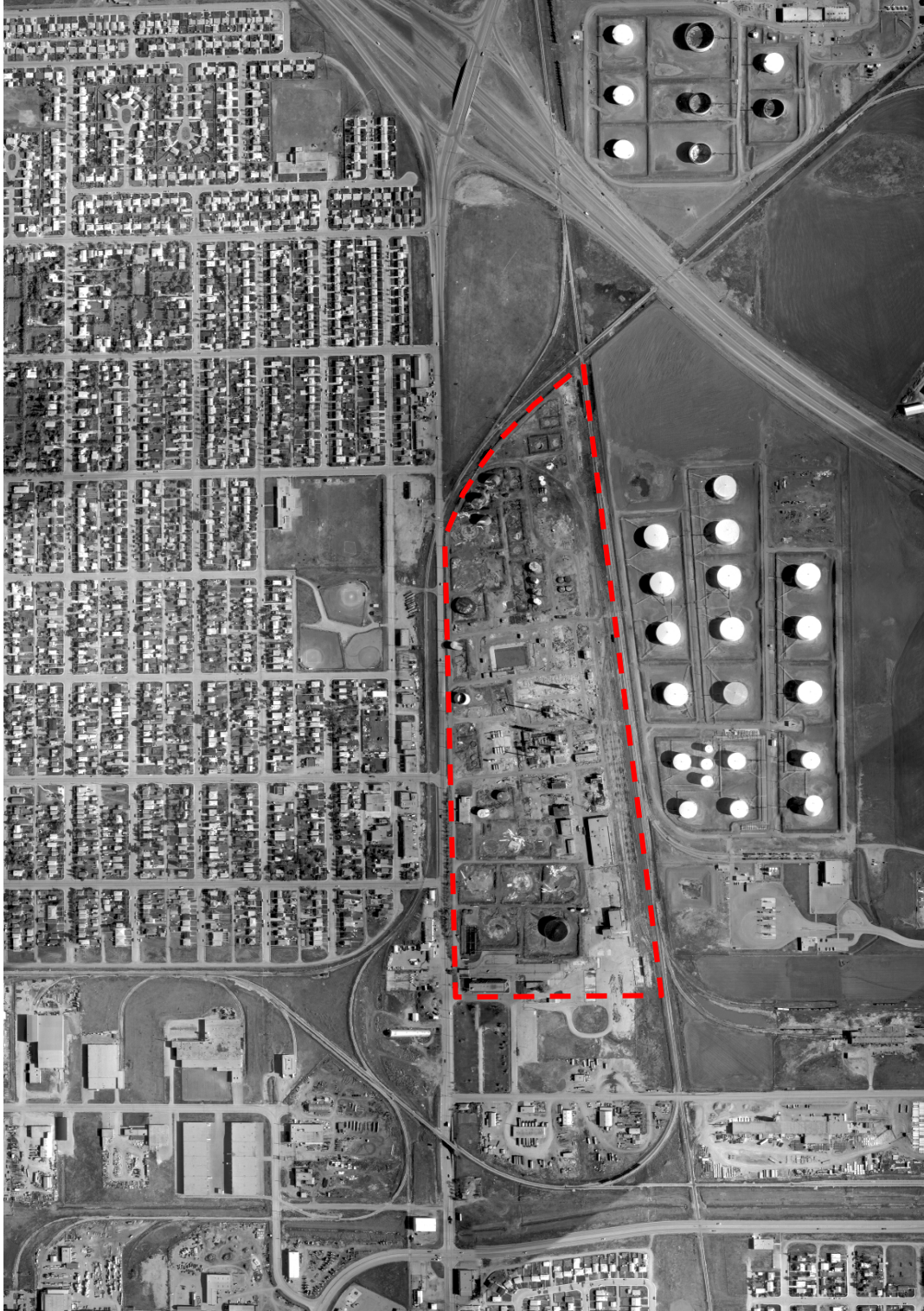
O'CONNOR ASSOCIATES

JOB NO.: 10-4700.300

DATE: 2008-05-23

DRAWN BY: RAN

DWG. NO.: E-19



--- Approximate Study Area



1978 Aerial Photograph

O'CONNOR ASSOCIATES

JOB NO.: 10-4700.300

DATE: 2008-05-06

DRAWN BY: RAN

DWG. NO.: E-20



--- Approximate Study Area



1978 Aerial Photograph

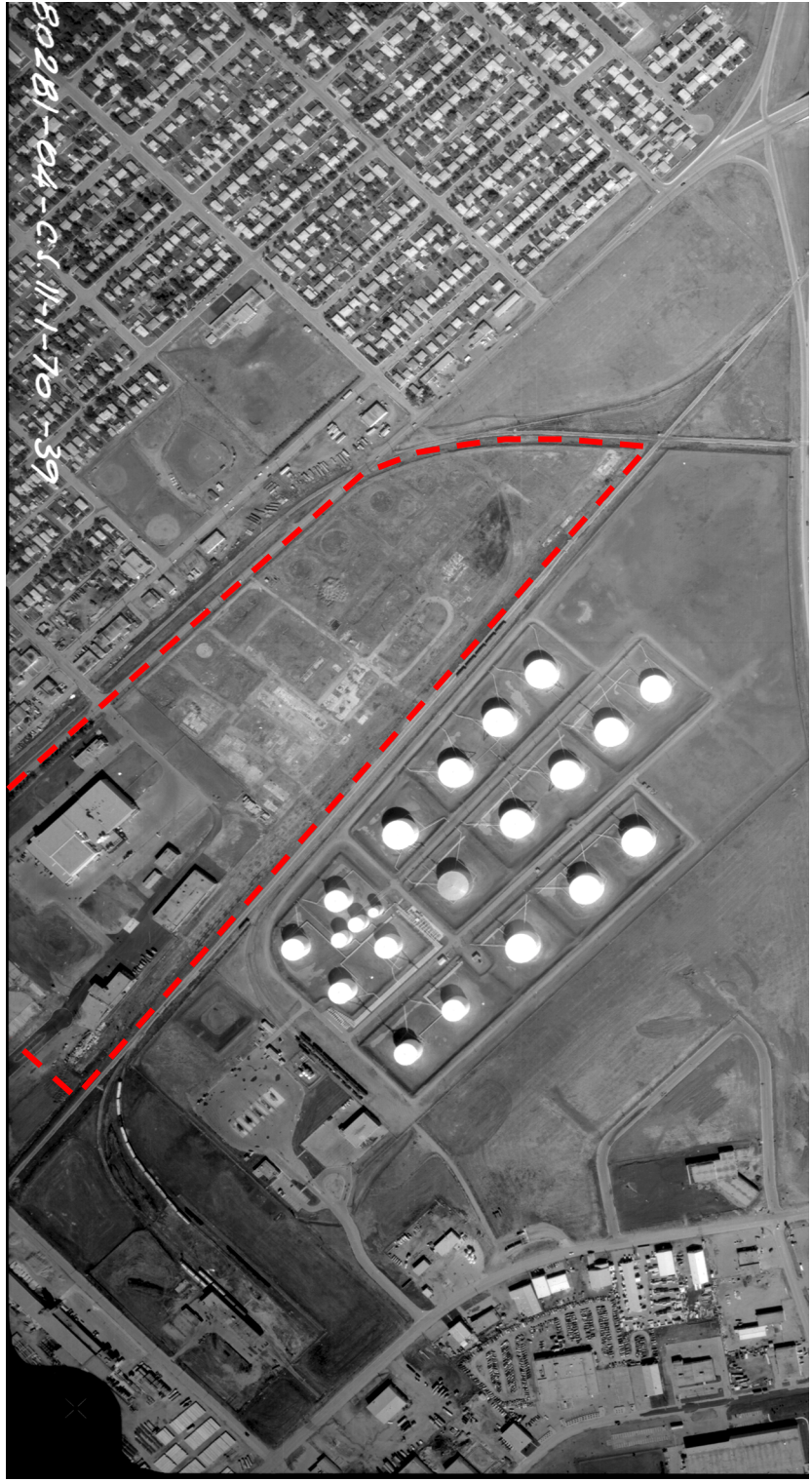
O'CONNOR ASSOCIATES

JOB NO.: 10-4700.300

DATE: 2008-05-21

DRAWN BY: RAN

DWG. NO.: E-21



80281-04-C(11-1-70-39)

--- Approximate Study Area

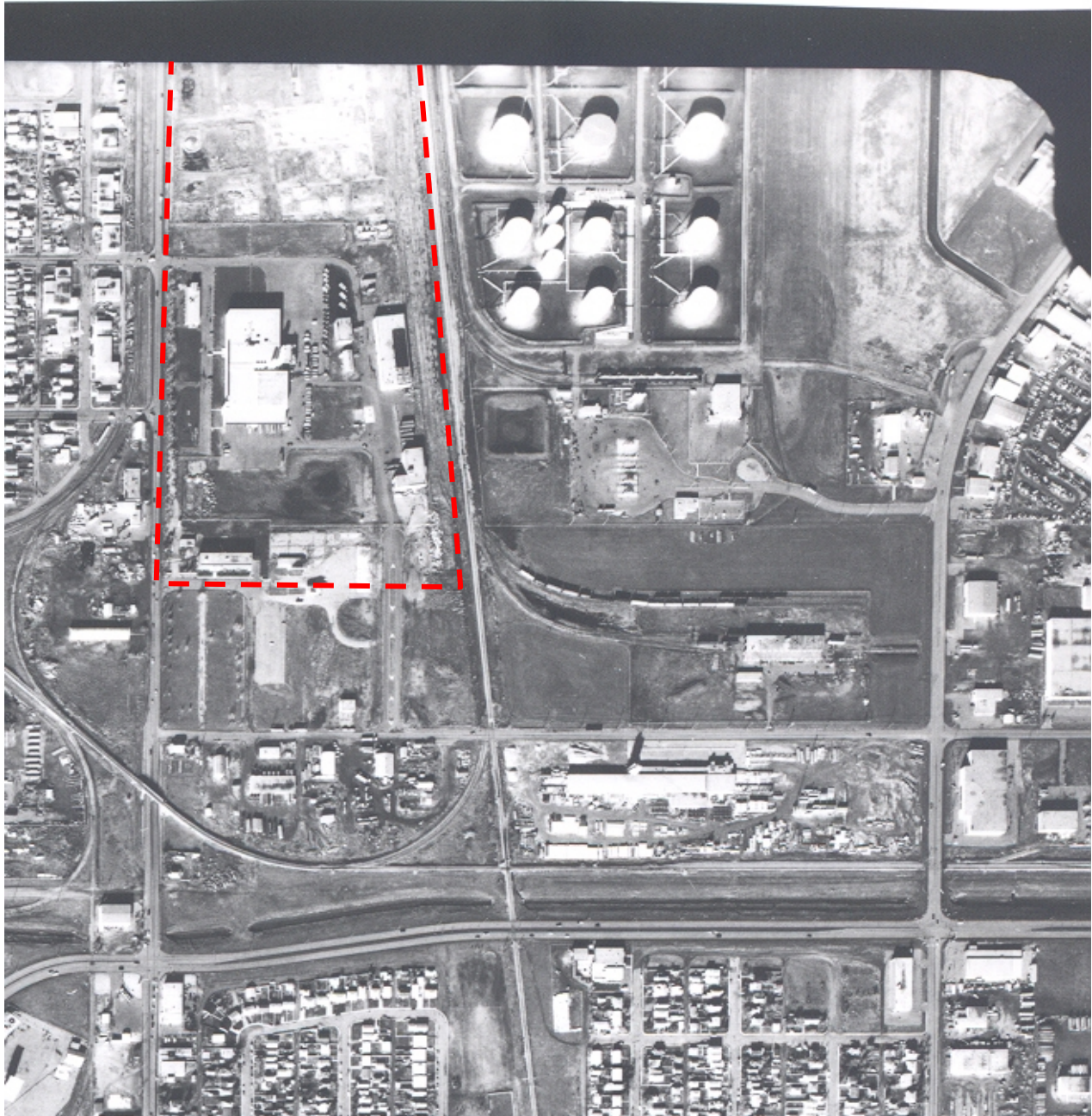


1980 Aerial Photograph

O'CONNOR ASSOCIATES

JOB NO.: 10-4700.300 DATE: 2008-05-06

DRAWN BY: RAN DWG. NO.: E-22



--- Approximate Study Area



1981 Aerial Photograph

O'CONNOR ASSOCIATES

JOB NO.: 10-4700.300

DATE: 2008-05-21

DRAWN BY: RAN

DWG. NO.: E-23



--- Approximate Study Area



1982 Aerial Photograph

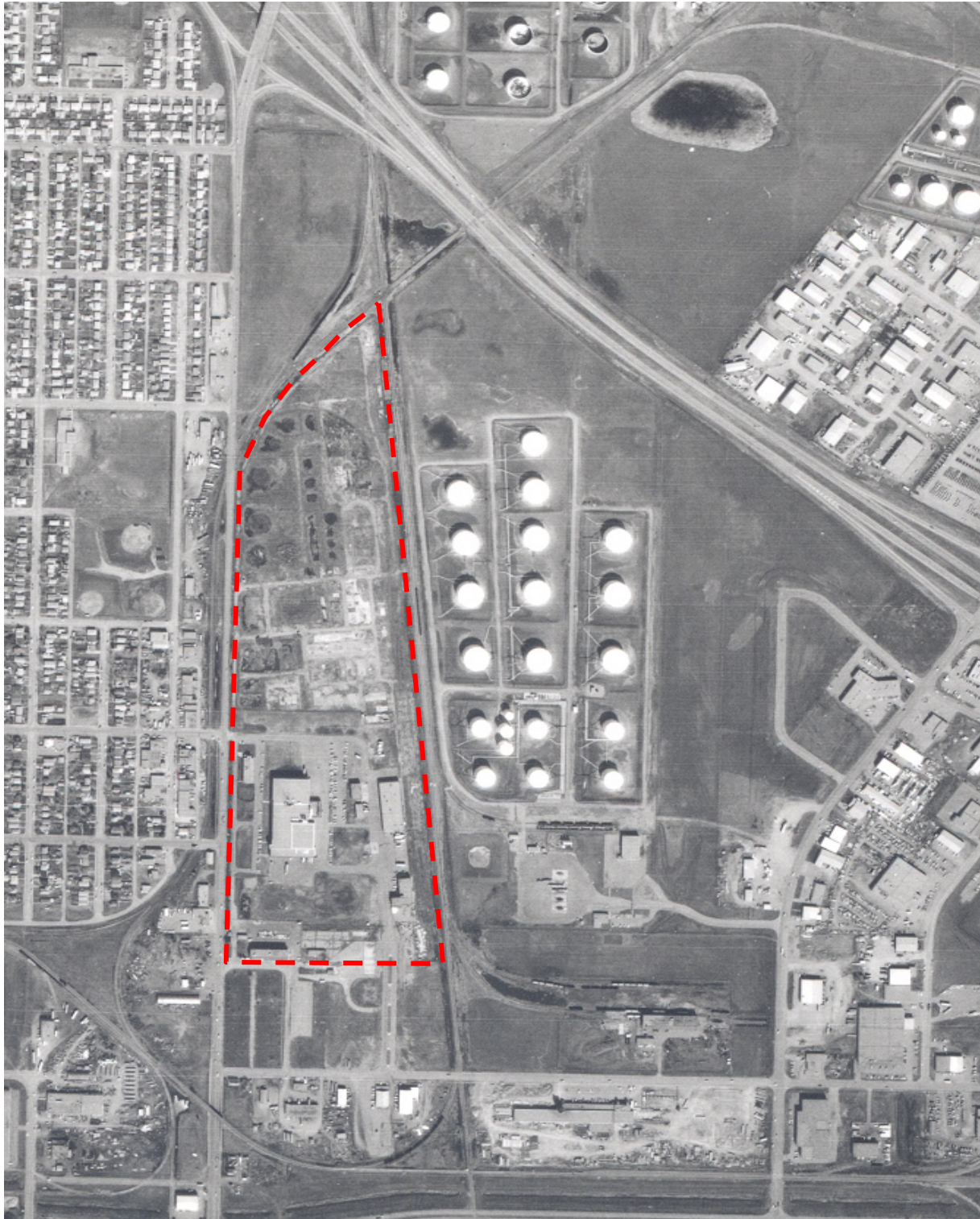
O'CONNOR ASSOCIATES

JOB NO.: 10-4700.300

DATE: 2008-05-21

DRAWN BY: RAN

DWG. NO.: E-24



--- Approximate Study Area



1983 Aerial Photograph

O'CONNOR ASSOCIATES

JOB NO.: 10-4700.300

DATE: 2008-05-21

DRAWN BY: RAN

DWG. NO.: E-25



--- Approximate Study Area



1986 Aerial Photograph

O'CONNOR ASSOCIATES

JOB NO.: 10-4700.300

DATE: 2008-05-15

DRAWN BY: RAN

DWG. NO.: E-26



--- Approximate Study Area



1987 Aerial Photograph

O'CONNOR ASSOCIATES

JOB NO.: 10-4700.300

DATE: 2008-05-06

DRAWN BY: RAN

DWG. NO.: E-27



--- Approximate Study Area



1989 Aerial Photograph

O'CONNOR ASSOCIATES

JOB NO.: 10-4700.300

DATE: 2008-05-21

DRAWN BY: RAN

DWG. NO.: E-28



--- Approximate Study Area



1993 Aerial Photograph

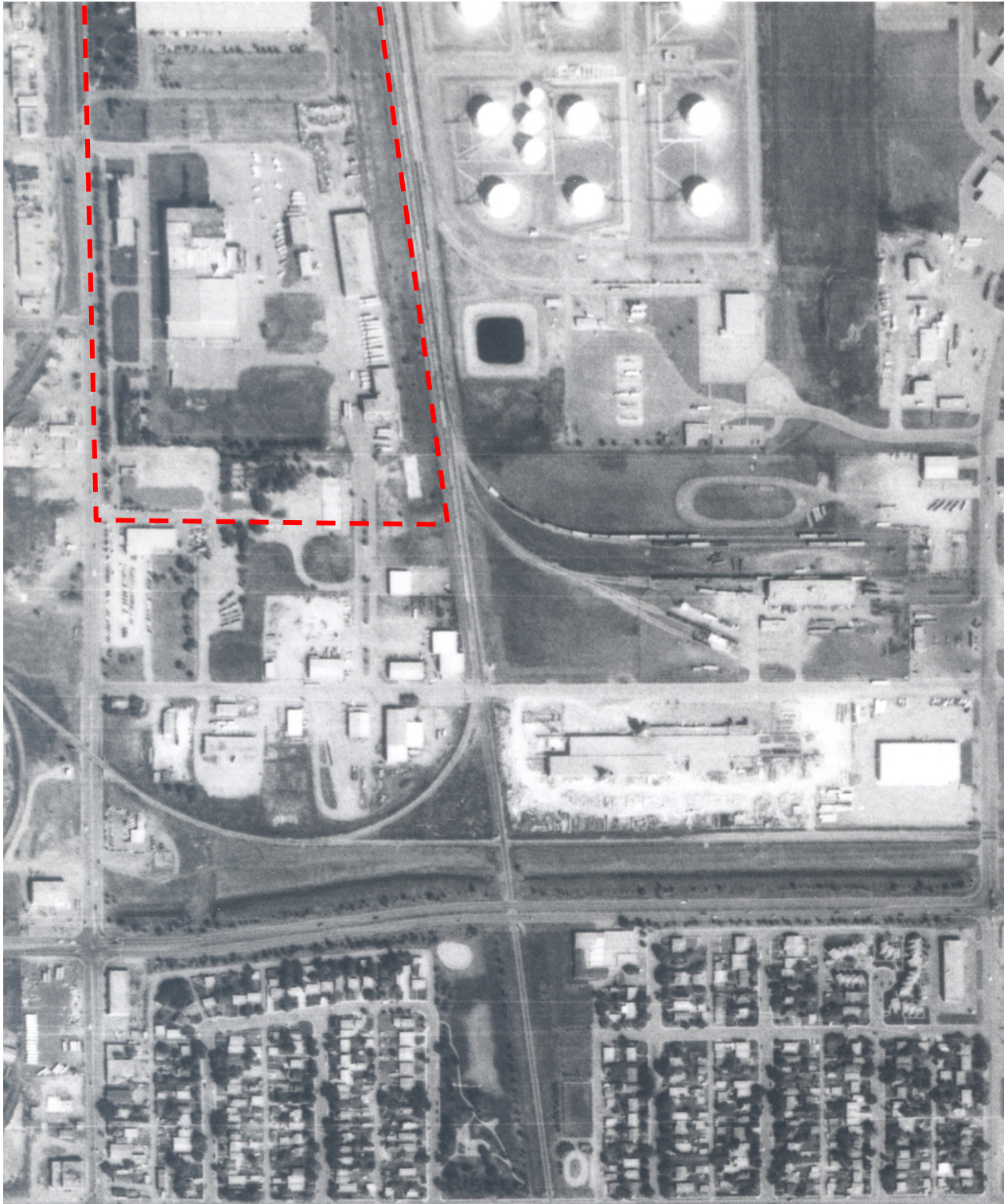
O'CONNOR ASSOCIATES

JOB NO.: 10-4700.300

DATE: 2008-05-06

DRAWN BY: RAN

DWG. NO.: E-29



--- Approximate Study Area



1997 Aerial Photograph

O'CONNOR ASSOCIATES

JOB NO.: 10-4700.300

DATE: 2008-05-21

DRAWN BY: RAN

DWG. NO.: E-30



--- Approximate Study Area



2005 Aerial Photograph

O'CONNOR ASSOCIATES

JOB NO.: 10-4700.300

DATE: 2008-05-06

DRAWN BY: RAN

DWG. NO.: E-31



--- Approximate Study Area



2006 Aerial Photograph

O'CONNOR ASSOCIATES

JOB NO.: 10-4700.300

DATE: 2008-06-16

DRAWN BY: RAN

DWG. NO.: E-32