



The current entrance to the Fomer Refinery site at 425 Winnipeg Street with the Former Refinery Technical Building now occupied with other businesses.



The Regina Food Bank at 445B Winnipeg Steet on the Former Refinery property.



Looking southwest at vacant land that now occupies the former main entrance to the Regina Refinery.



The west side of the Food Bank and the ICD building on the Former Refinery east of the former Technical building



Looking south from the parking area at the west corner of the Food Bank and east side of the former Technical building.



Former Refinery buildings present on the site east of the Food Bank.



Community First Computers east of Food Bank on the Former Refinery along the CP rail line.



The Community First Computers storage area on the Former Refinery.



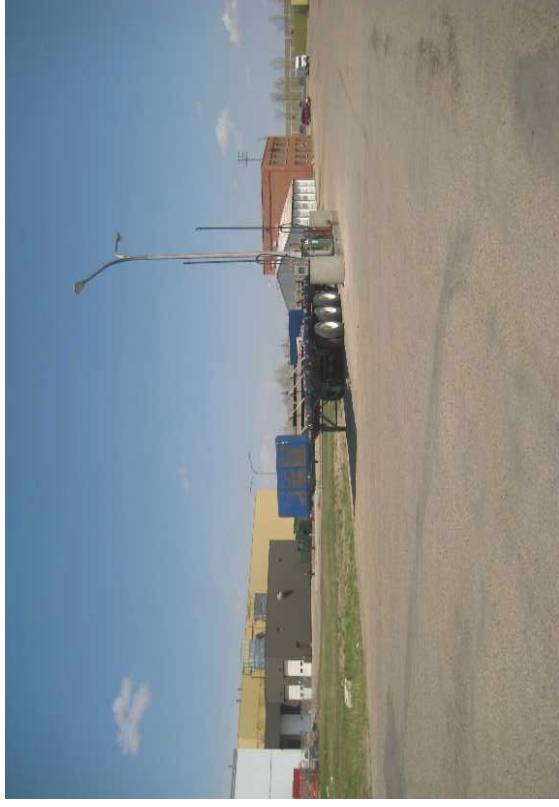
An abandoned Refinery warehouse building south of the Community First Computers and north of Adams Street in the southern portion of the Former Refinery.



A trucking operation occupying a paved area of the southern part of the Former Refinery just north of the abandoned warehouse building.



Looking north from the vacant former Refinery building along the CP rail line with the Terminal to the east.



Looking north on the former Refinery towards the pump island with the ICD building on the west.



Looking west at the former pump island with the Food Bank in the background.



Close up of gas pumps on the former pump island.



The former south gate to the Refinery at Adams Street. A Former Refinery building is present in the centre of the photo.



Underground facilities along Winnipeg Street adjacent to the southern part of the Former Refinery.



Vacant land north of the Food Bank looking northwest towards the Regina Transit Operations Centre.



Potential buried object from the Former Refinery identified between the Food Bank and the Regina Transit Operations Centre.



Building foundations on the vacant land north of the Food Bank and south of the Regina Transit Operations Centre.



Structures between the Food Bank and the Regina Transit Operations Centre.



The Regina Transit Operations Centre located at 333 Winnipeg Street.



A pump island on northwest side of Regina Transit Operations.



The northern portion of former Refinery now occupied by the City of Regina compost area.



North of City compost area looking towards the Staples call centre.



Looking south along east side of Regina Transit building with the Terminal in the left side of the photo.



Looking east at Terminal from Regina Transit building. Two groups of soil barrels from drill cuttings are present along the CP rail line between the properties.



Abandoned pipeline exposed along the CP rail line east of the City compost area and west of the Terminal



A manhole or hatch to an underground storage tank along the west side of CP rail line east of the City compost area and west of the Terminal.



Enbridge facility on the northeast side of the Ring Road.



Esso cardlock at 530 McDonald Street.



Esso Cardlock and fertilizer business at 530 McDonald Street on the east side of Terminal.

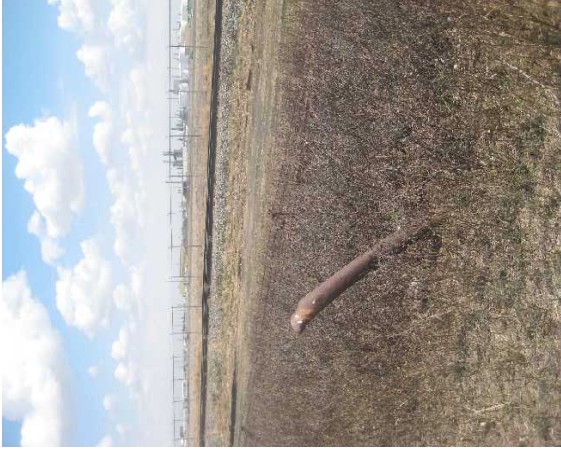


The Imperial Oil Distribution Terminal at 550 McDonald Street.





A pipe sticking out of the ground on south side of the Former Refinery looking east towards the Terminal.



A pipe sticking out of the ground east of the City compost area along the rail line.



Looking west at 609 Adams Street immediately south of the Former Refinery office buildings.



Looking east at 607 Adams Street immediately south of the Former Refinery



682 Adams Street along west side of Adams Street south of the Former Refinery.



Sign on 682 Adams Street south of the Former Refinery.



Businesses along the east side of Adams Street, south of the Former Refinery



Businesses along the south side of 1st Avenue, south of the Former Refinery.



Ross Avenue drainage ditch south of the Former Refinery.



Businesses along the west side of Winnipeg Street on the west side of the CN rail line.



Gas station on the north end of Winnipeg, outside of the study area.



Looking south along Winnipeg Street from Staples parking lot at the back of the commercial strip.